

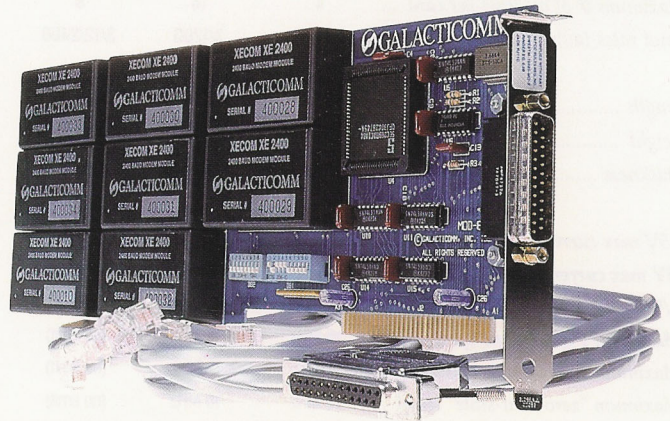
How To Support Your Customers

You can provide software updates, answer technical questions, and offer reams of product information to anyone with a modem. 24 hours a day, 7 days a week, **unattended.**

All you need is a PC, XT, AT, or 386-compatible, and a Galacticom multi-user hardware/software package. And some phone lines.

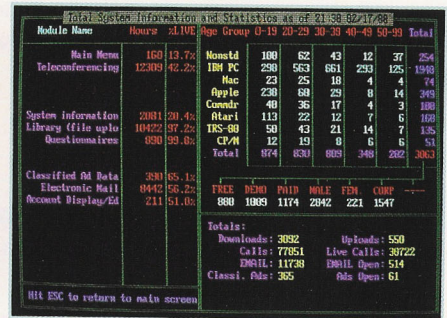
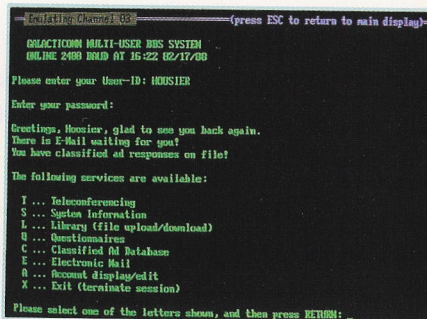
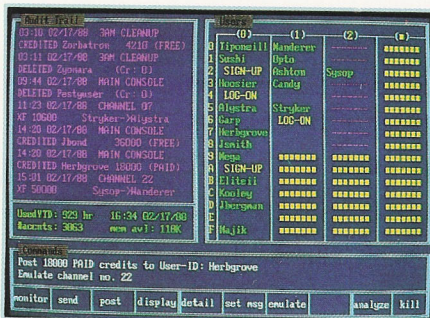
Our multi-user Bulletin Board System software, called **The Major BBS™**, supports your customers in several ways:

- Public Posting Areas technical dialogue, bulletins, Q&A listings
- Private E-Mail for one-on-one customer support
- Teleconferencing online "seminars" and real-time interaction
- File Upload/Download distribute updates, P.R. info, "app notes"
- Questionnaires for market research, order forms, etc.



Our multi-modem PC cards are available in several configurations: 2 to 8 modems per card at 2400 baud, or 2 to 16 modems per card at 1200 baud. These are true single-slot cards with the modems built right in — no additional serial ports, power supplies, or external boxes of any kind are required.

The Major BBS can support **up to 64 users** simultaneously, although most of our customers operate small 4- to 16-user systems. The C source code is also available, so that you can modify the system to suit your specific requirements.



For \$59, we'll send you an introductory copy of *The Major BBS*, suitable for use with your standard COM1 and/or COM2 modems. This is a fully functional version for up to 2 simultaneous users (3 if you count the SysOp). You can upgrade later to a fully supported 4, 8, 16, 32, or 64-user version for only \$300 per doubling (plus modem hardware of course!).

Yes! Send me a copy of
THE MAJOR BBS!

(Florida orders add \$3.54 tax. Overseas orders add U.S. \$25 for shipping.)

\$59.00 check enclosed

\$67.30 for C.O.D.

\$65.15 for credit card:

VISA MC AMEX /

Exp. Date

City State Zip

Signature

GALACTICOMM

Galacticom, Inc. 4101 S.W. 47 Ave.
Suite 101, Fort Lauderdale, FL 33314

Modem: (305) 583-7808
Fax: (305) 583-7846
Voice: (305) 583-5990

HARDWARE SPECIFICATIONS

	Model 4	Model 16	Model 2408
Maximum # of modems per card ...	4	16	8
Baud rates (auto-selecting)	3/1200	3/1200	3/12/2400
Length	5-3/16"	13-1/8"	13-1/8"
Height	4-3/16"	4-3/16"	4-3/16"
Thickness	3/4"	3/4"	3/4"
+5V max current (per modem)	250 mA	250 mA	190 mA
-5V max current (per modem)	-25 mA	-25 mA	-20 mA
R/W access time	250 ns	250 ns	150 ns
Maximum PC/AT-style speed	16 MHz	16 MHz	(no limit)
Maximum PC/XT-style speed	12 MHz	12 MHz	(no limit)
Maximum "zero-wait-state" speed ..	10 MHz	10 MHz	(no limit)
Operating temperature	0° to 50° C	0° to 50° C	0° to 50° C
Storage temperature	-25° to 85° C	-25° to 85° C	-25° to 85° C
Telephone line interface (each)	RJ-11 (male)	RJ-11 (male)	RJ-11 (male)
AC Impedance	600 ohms	600 ohms	600 ohms
Protection	FCC Part 68	FCC Part 68	FCC Part 68
Transmit Level	-9 dBm (max)	-9 dBm (max)	-9 dBm (max)
Carrier Detect Sensitivity (on)	-43 dBm (min)	-43 dBm (min)	-45 dBm (nom)
Carrier Detect Sensitivity (off)	-48 dBm (min)	-48 dBm (min)	-48 dBm (nom)
DAA Loop Current	20 mA (min)	20 mA (min)	20 mA (min)
300 bps protocol	Bell 103A	Bell 103A	103A / V.21
1200 bps protocol	Bell 212A	Bell 212A	212A / V.22
2400 bps protocol	—	—	V.22 bis
# of I/O ports (10-bit decode)	2	2	1
# of I/O ports (16-bit decode)	8	32	64
I/O addr DIP switch select range	200H to 3FEH	200H to 3FEH	200H to 3FFH
Type of I/O slot accepted	8/16/32	8-bit only	8 or 16-bit
Port interface model	8251A UART	8251A UART	SCC2698
Command set supported	XECOM 1201	XECOM 1201	Hayes

BBS SOFTWARE SPECIFICATIONS

RAM requirement	512K (640K if more than 16 users)
Extended/expanded RAM requirement ..	none
Hard disk requirement	20MB (minimum)
Operating system requirement	MS-DOS/PC-DOS 3.0, 3.1, 3.2, 3.3, and up
LAN compatibility (none required)	Novell, Corvus, 10-Net
C source compatibility	Turbo 1.5, Microsoft 4.0/5.0, Lattice 2.14
Btrieve compatibility	V4.01 and up (single-CPU version)
Executable file size	200K without overlays (subject to change)

User Account Management

Max number of user accounts	8,000,000
Selectable database fields	screen width, name, company, address (2 lines), phone no., system type, age, sex
Maximum User-ID length	9 characters
Maximum password length	9 characters
Max user-time "meterable"	2 billion seconds (63 years)

SIGs (Special Interest Groups)

Max # of SIGs	200
SIG user main menu options	Read/write bulletins, upload/download files, teleconference, select another SIG
Search strategies supported	keyword search, scan, title list
Security levels (per user per SIG) ..	invisible, read, download, write, upload, Co-Op, SIG-Op, SYSOP
"Quickscan" SIGs (per user)	20
Message threading	forward or backward, by topic
Tags maintained per message	message no., date, time, reply count, "reply-to", "forwarded-by", "cc:-of"
Max message topic length	40 bytes (plus 32 byte aux. topic)
Max message text length	1920 bytes
Max file size	up to size of disk
Max # of messages + files at once ..	2,000,000
Max # of messages + files ever	4 billion
Upload/download protocols	XMODEM, XMODEM-CRC, YMODEM, ASCII (paginated or non-stop)
Special features	novice/expert modes, CD-ROM compatible, context-sensitive help, keyword memory

Electronic Mail

E-Mail main menu options	Read/write/modify/erase messages
Tags maintained per message	message no., date, time, RRR, ATT, "reply-to", "forwarded-by", "cc:-of"
Maximum message topic length	40 bytes (plus 32 byte aux. topic)
Maximum message text length	1920 bytes
Maximum "attachment" file size ...	up to size of disk
Upload/download protocols	XMODEM, XMODEM-CRC, YMODEM, ASCII (paginated or non-stop)
Special features	carbon copies, forwarding, auto-purge, 2-way auto-alert, return-receipts

Teleconference

Number of "CB" channels	65,535
Max length of user input line	255 bytes (plus CR)
User screen display format	transcript
Max concurrent users/channel	64
Special features	"chat", "page", "whisper", activity-scan, list/unlist, moderators, "squelch"

Questionnaires

Max no. of questionnaires	10
Max no. of questions in each	20
Max length of each question	1920 bytes
Max length per answer	127 bytes
Special features	results display option, offline report generator with duplicate elimination

User Registry

Max no. of registered users	4,000,000
Max no. of fields per user	30
Max overall storage per user	870 bytes
Default templates supplied	Resumé, Business Interests, Dating Game
Special features	directory scan, detailed lookup, auto-alert if not registered, profanity filter

The Major BBS is a trademark of Galacticom, Inc.
 PC, XT, AT, and PC-DOS are trademarks of International Business Machines Corp.
 Hayes is a registered trademark of Hayes Microcomputer Products, Inc.
 XECOM is a trademark of XECOM, Inc.
 Novell is a trademark of Novell, Inc.
 Corvus is a trademark of Corvus Systems, Inc.
 10-Net is a registered trademark of Digital Communications Associates, Inc.
 Turbo C is a trademark of Borland International, Inc.
 Microsoft C and MS-DOS are trademarks of Microsoft Corp.
 Lattice C is a trademark of Lattice, Inc.
 Btrieve is a trademark of Softcraft, Inc.

ALL SPECIFICATIONS SUBJECT TO CHANGE WITHOUT NOTICE